



METAL TRADE COMAX, a.s.

COIL COATING

Custom pre-painting since 1973



METAL TRADE COMAX, a.s.
273 24, Velvary 420, Czech Republic
coating@mtcomax.cz · www.mtcomax.cz

Member of





Steel and aluminium - that's us

CUSTOM PRE-PAITING SINCE 1973

We have painted over 1 million tons of steel and aluminum belts



Product variability

We coat steel and aluminium



Delivery within 2 weeks

Flexible planning, our own color mixing system, warehouse stock



Large and small orders

Taking on orders starting at 800 kg of aluminium



A wide range of colours

Up to 2,000 shades and multiple colours option



Consistently high quality

Quality input material and quality coating in every single order



Multiple tests

Pre-painted coils are tested in laboratories and in the real world



Certification

International certificates for both processes and products



Responsibility

We place emphasis on the environment, we recycle

WE COAT STEEL AND ALUMINIUM

We process high-quality aluminium, steel and galvanised sheets from renowned European smelters on our coil coating line. All materials undergo an incoming inspection, and their quality is guaranteed by the manufacturer's inspection certificate.

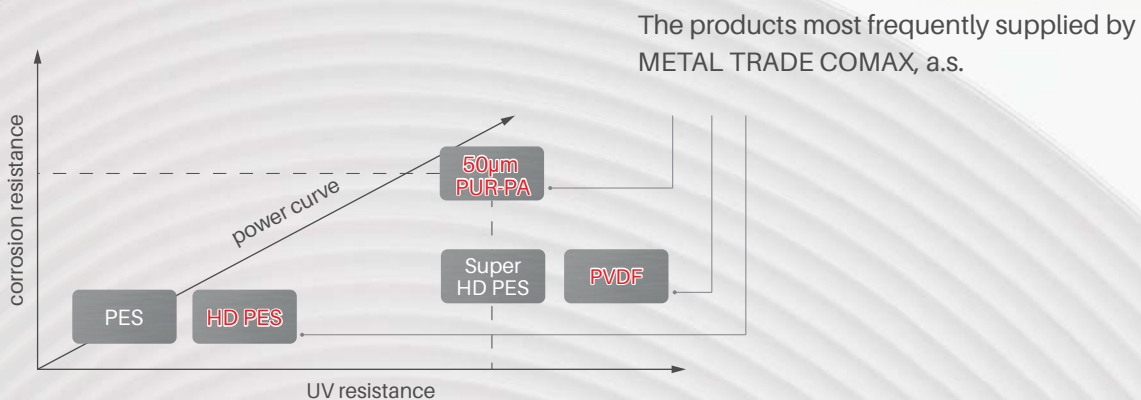
Material	Al alloys	FeZn / Fe
Quality	EN AW 1050, 3*series, 5*series	DX51-DX53, S220-S350, DC01
Thickness	0,4 - 2,0 mm	0,3 - 1,2 mm
Width	600 - 1 340 mm	600 - 1 340 mm
Inside ø of coil	500/600 mm	500/600 mm
Outside ø of coil	2 000 mm	2 000 mm
Max. weight	3 500 kg	8 500 kg
Min. order quantity	800 kg	1 500 kg



Variability of our coatings

Material	Surface	Thickness	Resistance	Functional warranty
HD PES	smooth	20 - 27 µm	RUV 3	10 years
HD PES W	wrinkled	20 - 30 µm	RUV 3	10 years
SHD PES	smooth	min 35 µm	RUV 4	20 years
PUR-PA	structured	45 - 60 µm	RUV 4	20 years
PVDF	smooth	28 - 37 µm	RUV 4	15 years
Primer/Glue for PVC	x	7 - 12 µm	x	x
Backcoat	smooth	3 - 18 µm	RUV 2	1 year (inside use)
PVC foil	structured	120 - 150 µm	x	10 years
PET foil	smooth	30 - 50 µm	x	10 years

Resistance chart



Exceptional colour range

Our colour mixing system generates an exceptionally wide range of colours. We currently provide coatings in up to **2,000 colours** derived from RAL, RAL Design, NCS or Pantone colour systems in a **glossy, semi-matte or matte finish**.

We can prepare additional shades according to other colour index or **the customer's standard** in a very short time from **800 kg** of coated aluminium or **1,500 kg** of coated steel.



We also coat faux wood and 3D effects

Coated 2D surface

- Smooth (matte/glossy), range of decors
- For both indoor and outdoor use
- High abrasion resistance (RUV3)



Wood Flat 1



Wood Flat 3



Wood Flat 4



PUR-PA Winhester

3D coating effect

- Structured (amatte/glossy), range of decors
- For both indoor and outdoor use
- High abrasion resistance (RUV3)



Golden Oak



Dark Oak



White Oak



Zebrano

3D patina effect

- Smooth (matte), range of decors
- For both indoor and outdoor use
- High abrasion resistance (RUV3)



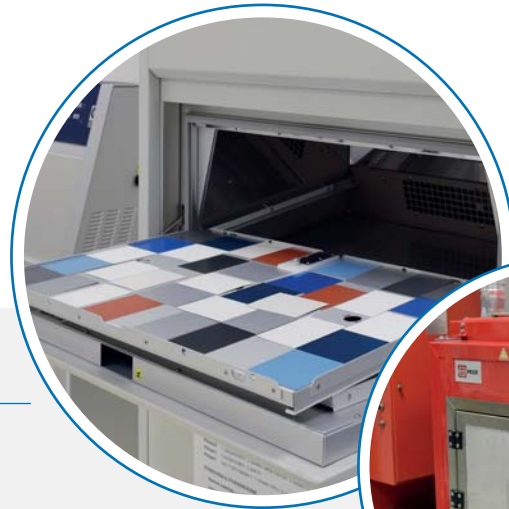
Patina Grau



Patina Black

Quality first

A **sophisticated control system** allows us to maintain a consistently high quality of our products, optimise their properties and guarantee a long service life.



Our own laboratories and tests abroad

SALT FOG

- Corrosion resistance
- Cyclic tests
- Salt fog - water condensation - drying - close to reality
- Corrosion in the scribe
- Corrosion and adhesion of the film

UV EXPOSITION + WATER CONDENSATION

- UV + water condensation
- Cool down the surface, cleaning the surface
- Spraying - fast decrease of temperature
- Heat stress
- Cleaning the surface
- Change of colour and gloss

WATER CONDENSATION

- Cyclic test
- Resistance of coating to water condensation

SUN (XE) EXPOSITION

- Possibility of 3D samples
- Xe - the spectrum close to reality
- The possibility of glass filters
- Change of colour and gloss



CUTTING

Input material

- Steel and aluminum coils with a thickness of **0.3 - 4.0 mm** and a width of **up to 1,600 mm**
- The centre also cuts material provided by customers.
- All materials undergo incoming inspection and their quality is documented by the manufacturer's certificate.



Coils / Strips

Material	Al alloys	FeZn / Fe
Quality	EN AW 1050, 3*serie, 5*serie	DX51-DX53, S220-S350, DC01
Thickness	0,3 - 4,0 mm	0,3 - 1,5 mm
Coil width	150 - 1 600 mm	150 - 1 600 mm
Strip width	min 18 mm	min 18 mm
Inside ø	400/500/600 mm	400/500/600 mm
Outside ø	max 2 000 mm	max 2 000 mm

Sheets

Material	Al alloys	FeZn / Fe
Quality	EN AW 1050, 3*serie, 5*serie	DX51-DX53, S220-S350, DC01
Thickness	0,3 - 4,0 mm	0,3 - 1,5 mm
Width	250 - 1 550 mm	250 - 1 550 mm
Length	300 - 6 000 mm	300 - 6 000 mm
Max. weight	1 500 kg	3 000 kg



LAMINATION

A wide range of decors, customized decor options, indoor and outdoor use

Food-safe PVC (150 µm thick)

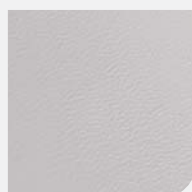
- Laminates for demanding indoor applications
- Non-toxic (approved by the State Institute of Public Health)
- For the food and pharmaceutical industry



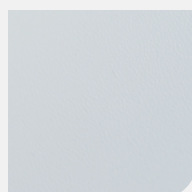
Foodsafe 9002



Foodsafe 9010



Foodsafe 9003



Foodsafe 9016

PET folie (25 µm thick)

- For both indoor and outdoor use
- Application on galvanised sheet metal
- High aesthetic value (wide range of patterns)
- Application of protective UV film option



Concrete Bright



Concrete Lines



Stone Design



Brick Design

STUCCO (EMBOSSING)

A pattern is pressed into the surface of the belt on both sides using engraving rollers. It is performed on both natural and pre-painted belts.

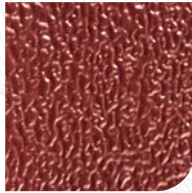
Attractive structured appearance, strengthening of the material, optical reduction of gloss or minor surface defects that may occur during use of the product.

Embossed coil parameters

Material	Al alloys	FeZn / Fe
Thickness	0,4 - 1,5 mm	0,3 - 1,0 mm
Width	300 - 1 600 mm	300 - 1 600 mm



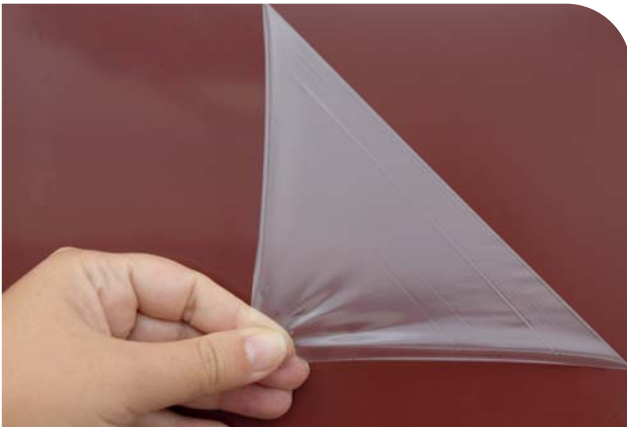
Mill Finished



Prepainted



Prepainted textured



FILM COATING

First-class paint and protective film is the perfect combination. Protection against damage during handling or during further standing processing.

Self-adhesive protective film

- The film **can be reapplied** after its partial removal
- Film thickness: 50 - 100 µm
- Transparent or UV black and white design
- **Option to customize with customer's logo**

Laminated protective film (Hot film)

- This film **cannot be reapplied** after its removal as the adhesion is lost
- Film thickness: 100 µm
- Transparent design

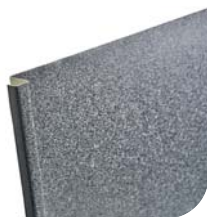
PROFILING

COMAX ROOFS® - modern roofing from our pre-painted sheet metal **9 types of roofing.**

- One-site survey and measurement
- Laying plan
- Custom shade for orders over 400 m²
- Suitable for solar installations
- Roofing delivery to the destination
- Warranties up to 75 years



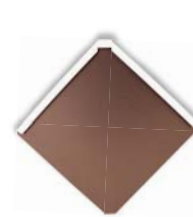
COMAX KLIK



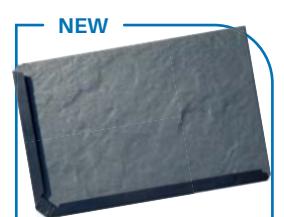
COMAX FALC



COMAX ComBo 430



COMAX BoCo 330



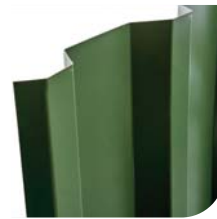
COMAX Rechteck



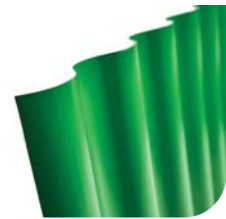
COMAX TILE



COMAX ALUKRYT®

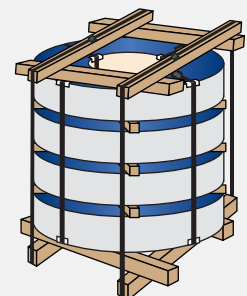
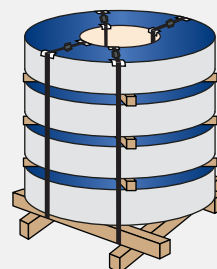
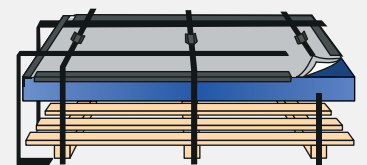
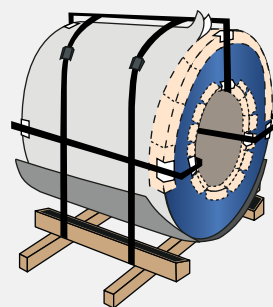


COMAX TRAPEZE



COMAX WAVE

Packing



Our export



We prioritise the people and planet

- We incinerate the flue gases produced during coating and curing, which prevents the release of hydrocarbons into the atmosphere. We use the heat generated in production to heat production premises.
- We recycle 100% of solvents - we regenerate used solvents by vacuum distillation and reuse them in production.
- We are mindful of the energy efficiency of our production - we operate powerful rooftop solar power plants that cover a significant part of our energy consumption.

